



The world's favorite lock





## Company Profile

**Platform Solutions Limited** started its journey in 2013 with the vision to introduce high-end quality products and services to the consumers of Bangladesh. By combining our technical expertise, we have brought world-renowned brands such as Yale-ASSA ABLOY (door opening solutions), FLOS & Ares (Architectural & Decorative lighting), high end Chinese lighting, door opening hardware products, and solutions over these years. Platform Solutions Limited has become a renowned name for providing one stop solution, in terms of both consultancy and unique expertise in installation, commissioning and support services. It has set goals to strengthen its relationship with the latest concepts, technologies, products, services and solutions to make a significant footprint on sustainable development of Bangladesh

### **Our Vision:**

**Platform Solutions Limited.** (PSL) strives to make Bangladesh more sustainable through innovations, consultancy, and service rendering. We aim to achieve this by providing customers with high quality products, installation and aftersales services. benefit and cost reduction. We are committed to be a socially and environmentally responsible organization.

### **Our Mission:**

**Platform Solutions Limited.** (PSL) provides exceptional services by persuing business through innovation and advances technology. It engaged in hardware and lighting design, installation and commissioning of environmentally conscious products using best in class architectural and outdoor lighting, physical security systems with outstanding reliability and performance. Platform Solutions Limited started its journey in 2013 with the vision to introduce high-end quality products and services to the consumers of Bangladesh. By combining our technical expertise, we have brought world renowned brands such as Yale-ASSA ABLOY (door opening solutions), FLOS & Ares (Architectural & Decorative lighting), high end Chinese lighting, door opening hardware products and solutions over these years. Platform Solution Limited. has become a renowned name for providing one stop solution, in terms of both consultancy and unique expertise in installation, commissioning and support services. It has set goals to strengthen its relationship with the latest concepts, technologies, products, services and solutions to make a significant footprint on sustai-nable development of Bangladesh.

### **Turnkey Solutions:**

Platform Solutions Limited. (PSL) delivers turnkey solutions that take all the hassle out of cost reduction and ensure you smooth and dependable operations. PSL is committed to deliver the best quality in each one of our products and services. In that reason, PSL take full responsibility for each stage of the process from Design to Delivery and Installation this to ensure the selection of the best options and the delivery of the most complete solutions.





# Our Landmark Project



Colonel Malek Hospital , Manikganj



Sheikh Hasina Burn Institute



Labaid Cancer Hospital



Hotel Sheraton , Banani



Intercontinental Dhaka



AIUB Permanent Campus



ULAB Permanent Campus



UIU Campus



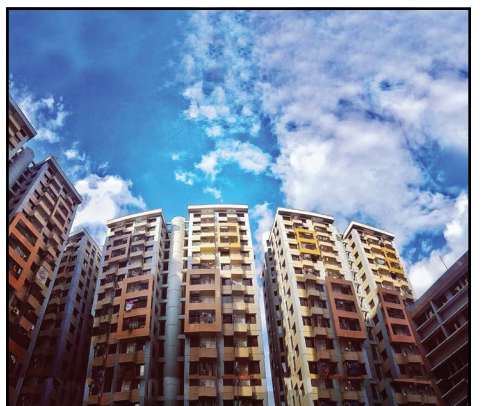
Sunny Dale Private Ltd



Aga Khan Academy



Secretary Apartment (Eskaton)

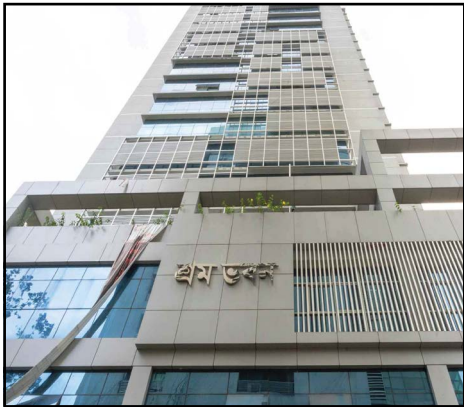


Govt Officers Apartment (Mirpur)





# Our Landmark Project



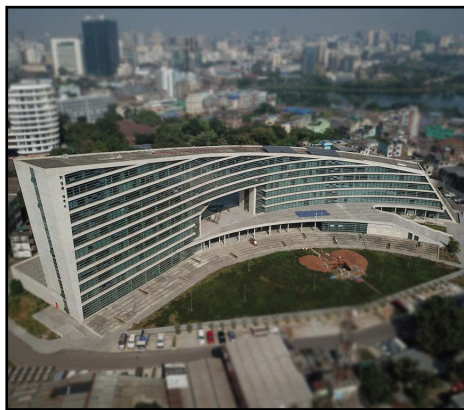
Sromo Vaban



Ministry Apartment( Bailey Road)



Information Center



Roads & Highway –Headoffice –Tejgaon



Bar Council



Payra Port –Potuyakhali



Foreign Ministry



Jigatola Officers Quarter



Concord Lake City



Navy Shaheenbag Project



South Majesty

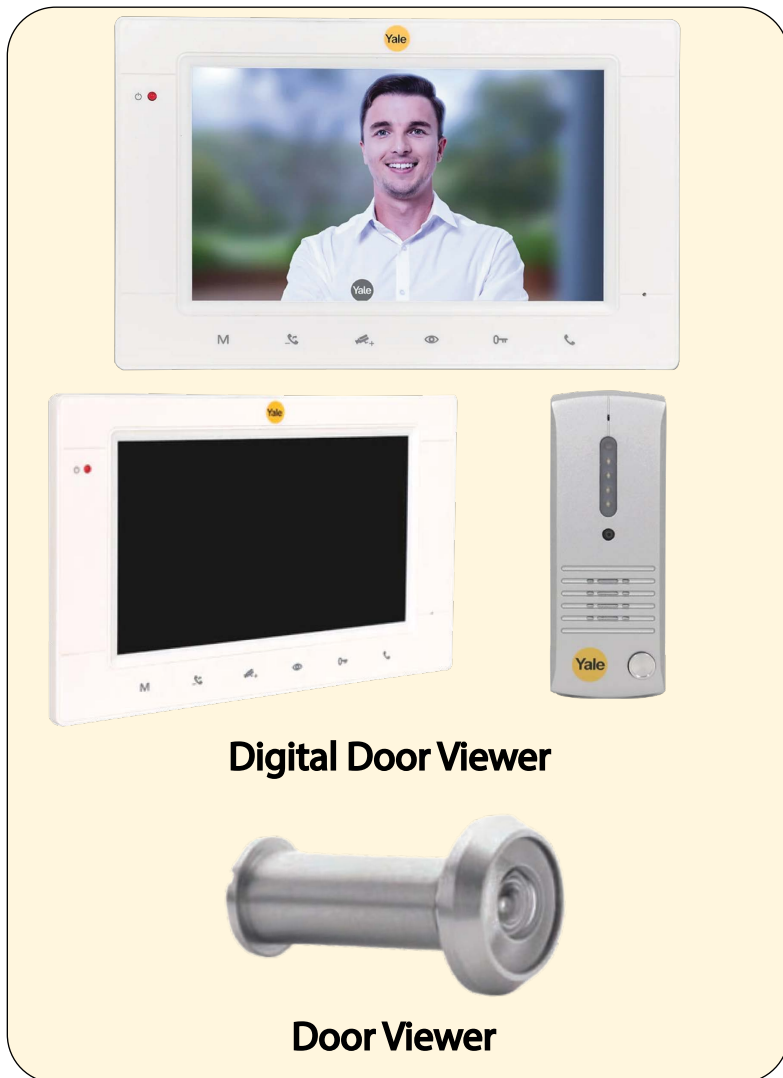


Rakeen City





## Digital Door Viewer



### JB 305 E

Intercom system for home, for easy monitoring of visitors. Use with Home automation system and Smart Locks.

1. The Video Door Phone facilitates two way communication. It can connect to up to 2 Outdoor units and 4 Indoor units for single family.
2. Facilitates simultaneous Monitoring and talking with a visitor. Supports Point-to-point intercom and broadcast function
3. JB 305 E comes with 7 inch ABS-panel indoor monitor with touch buttons and 16 mm thin design. Indoor Monitor has 800\*480 resolution.
4. JB 305 - E comes with slim design outdoor station & cast-aluminum outer panel. Each indoor unit can support an external analog CCTV camera.
5. JB 305- E supports intercom, remote unlock and monitor the door.
6. Input call be transferred from one indoor monitor to another.
7. Adjustable talk volume and ringing volume.

### Features & Specification

1. Fits all doors 35 to 50mm thick.
2. Allows safe inspection of visitors with a wide 180° deg angle lens.
3. Precision optical lens. Satin chrome finish.
4. Allows safe inspection of visitors.
5. Wide 200 deg angle of view.
6. Solid brass construction.
7. Precision optical lens.







# Digital Door Lock



## YDM7116A

Yale YDM7116A provides multiple access solutions

1. Finger Print
2. Pin Code
3. RFID Card
4. Mobile access via Yale Access App (Optional\*)
5. Remote Access via Yale Access App(Optional\*)



## YDM4115A

1. Fingerprint, PIN Code & Mechanical Key
2. One-touch Fingerprint Verification Method (Easy Scan)- 100 Users
3. Pin Code Access - 100 Users
4. Mechanical key override - 2 Keys
5. Smart Connectivity
6. Video Door Phone



## YMI70A

1. PIN Code: Available, (Up to 100 users)
2. RFID Key Tag: Available (Up to 100 users)
3. Fingerprints: Available (Up to 100 users)
4. Mechanical Key Override: Available (2 Keys)
5. Bluetooth: Available (Optional)
6. WiFi Connection: Available (Optional)
7. Remote Control: Available (Optional - Sold Separately)



## YDM4109A

App control - Lock and unlock your door, send virtual keys to guests and receive notifications\*

Access in a way that suits you - Unlock your door with the Yale Access App, a PIN code, or your fingerprint

1. Auto locking - Automatically locks your door when you leave your home
2. Type: Mortice lock
3. Mechanical keys: 2
4. Fingerprint access
5. Access via PIN Code: 6-12 digits
6. Finish: Silver



## YDM3109A

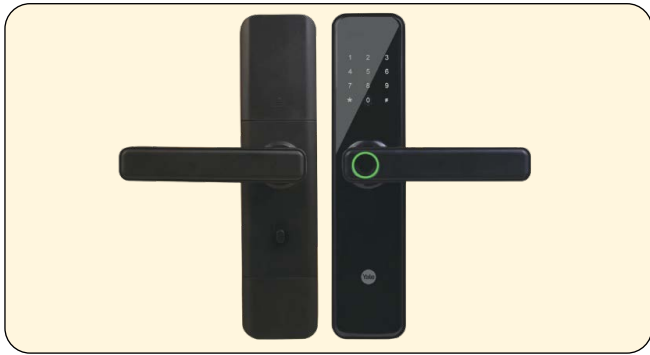
The Yale YDM3109A smart lock is a reliable choice for keyless home entry, making your busy modern life that bit easier.

1. DIN type mortise lock
2. Pin code (6-12 digits)
3. Mechanical key: 2
4. Center distance: 72mm
5. Backset: 60mm
6. Door thickness: 40-80mm
7. Operating temperature: -15 to +55 °C
8. Suitable for left or right opening





# Digital Door Lock



## YDME50Nxt

Smart Door Lock, Black, Fingerprint, PIN, RFID, Manual Key Access

- 1. Door Thickness in mm: 35-65
- 2. Fingerprint: 100
- 3. Manual Key: 2
- 4. Model Type: Mortise
- 5. PIN Codes: 100
- 6. RFID Card: Yes



## YDD424A

YDD424A Access (DeadBolt Smart Lock) - Fingerprint, PIN Code, Mechanical key and mobile access via Yale Access APP (optional)\* and remote access via Yale Access APP (optional)\*

- 1. **Lock Type: Deadbolt**
- 2. Pin code: 6-12 digits
- 3. Finish: Champagne Gold
- 4. Door Thickness: 40-55 mm
- 5. One-touch fingerprint verification method
- 6. Tubular deadbolt



## YDG413A-Glass Door Lock

Smart, Secure and Convenience for Your Glass Door  
Yale YDG413 smart lock gives you simplified control on protection for glass door. Easily accessible via personalized PIN code and fingerprint scan.

- 1. Biometric Finger Print Scan
- 2. PIN Code
- 3. Smart Connectivity: Bluetooth, Z-Wave and Zigbee



## YDR50GA

Six easy ways to use the lock, there is no way you can be locked out of the house ever again. Multiple access such as fingerprints, RFID cards, pin codes, App access, remote control, and mechanical keys override.

- 1) Control your front door from anywhere with your phone
- 2) Receive alert notifications
- 3) Grant entry from wherever you are with the Yale App
- 4) Auto-lock and unlock as you come and go







# Signature Series



**M8773BC**

- 1. ANSI Grade 2 Entrance Handleset, Door thickness:45-55mm & backset :70mm (2-3/4"), Finish: Satin Stainless Steel
- 2. More than 800,000 times lifecycle tested,



**M8773F4**

- 1. ANSI Grade 2 Entrance Handleset, Door thickness:45-55mm & backset :70mm (2-3/4"), Finish: Golden
- 2. More than 800,000 times lifecycle tested,



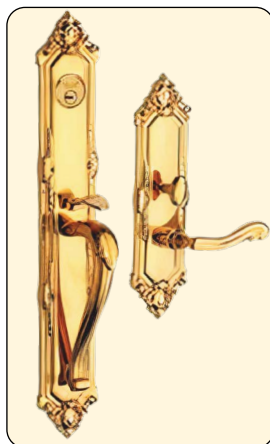
**M8773D3**

- 1. ANSI Grade 2 Entrance Handleset, Door thickness:45-55mm & backset :70mm (2-3/4"), Finish: Satin Stainless Steel
- 2. More than 800,000 times lifecycle tested,



**M8773D1**

- 1. ANSI Grade 2 Entrance Handleset, Door thickness:45-55mm & backset :70mm (2-3/4"), Finish: Golden
- 2. More than 800,000 times lifecycle tested,



**M8773J1**

- 1. ANSI Grade 2 Entrance Handleset, Door thickness:45-55mm & backset :70mm (2-3/4"),
- 2. More than 800,000 times lifecycle tested,



**M8773G1**

- 1. ANSI Grade 2 Entrance Handleset, Door thickness:45-55mm & backset :70mm (2-3/4"), Finish: Golden
- 2. More than 800,000 times lifecycle tested,



**M8773F1**

- 1. ANSI Grade 2 Entrance Handleset, Door thickness:45-55mm & backset :70mm (2-3/4"), Finish: Satin Stainless Steel
- 2. More than 800,000 times lifecycle tested,



**M8773D3**

- 1. ANSI Grade 2 Entrance Handleset, Door thickness:45-55mm & backset :70mm (2-3/4"), Finish: Golden
- 2. More than 800,000 times lifecycle tested,



# Entrance Handle Set



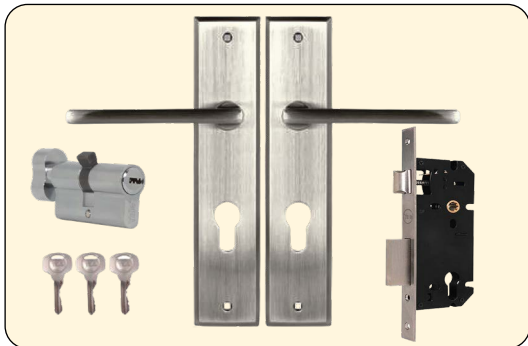
## SH6622 US15

Tubular Main Door Handle Set  
 Finish: US15 (SS), knob: Brass or SS.  
 Knob type entrance function  
 Material for strike plate and face plate: Steel.  
 Material for rose: Brass or SS,  
 3 pcs nickel plated brass key. Rose size: 65mm.  
 Material for cylinder plug: Zinc alloy. (Normal key)  
 Brass (dimple key) Cylinder housing: zinc alloy;



## SH6622 US5

Tubular Main Door Handle Set  
 Finish: US5 (Antique) Cylinder housing: zinc alloy;  
 Knob type entrance function, Brass (dimple key)  
 Material for strike plate and face plate: Steel.  
 Material for rose: Brass or SS, knob: Brass or SS.  
 3 pcs nickel plated brass key, Rose size: 65mm.  
 Material for cylinder plug: Zinc alloy. (Normal key)



## YMC502-10- 60MM-8545-TT-SS

Material: Zinc Alloy Spindle 8x8mm  
 Available Lever Handle with 10" backplate,  
 Lever Handle with 10" backplate  
 Lever Handle on plate  
 Conforms to EN1906 :2012  
 Tested to 200,000 cycles  
 Finish options Satin Steel



## YMC502-10- 60MM-8545-TT-AB

Material: Zinc Alloy Spindle 8x8mm  
 Available Lever Handle with 10" backplate,  
 Lever Handle with 10" backplate  
 Lever Handle on plate  
 Conforms to EN1906:2012  
 Tested to 200,000 cycles  
 Finish options Antique Brass







# Mortise Handle Set



**YTL 702**  
(Finish: Satin Stainless Steel)



**YTL 701 AB**  
(Finish: Antique Brass)



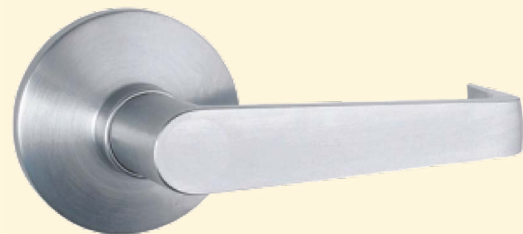
**YML 502**  
(Finish: Satin Stainless Steel)



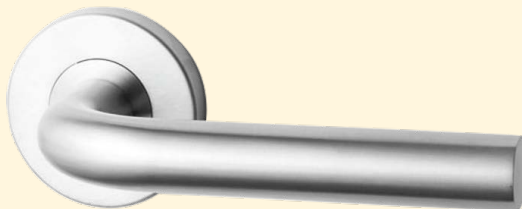
**YTL 702 AB**  
(Finish: Antique Brass)



**YTL 703**  
(Finish: Satin Stainless Steel)



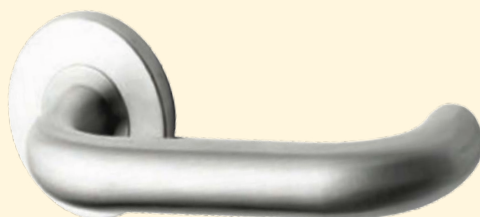
**YTL 110**  
(Finish: Satin Stainless Steel)



**YTL 020**  
(Finish: Satin Stainless Steel)



**YTL 070**  
(Finish: Satin Stainless Steel)



**YTL 010**  
(Finish: Satin Stainless Steel)



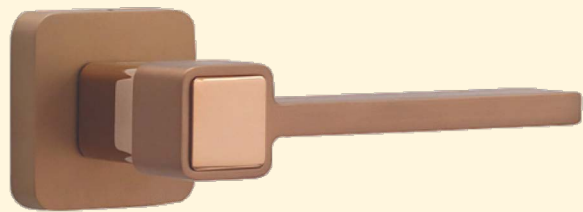
**YTL 060**  
(Finish: Satin Stainless Steel)



# Mortise Handle Set



**YMSL-1001-BM**  
(Finish: Black)



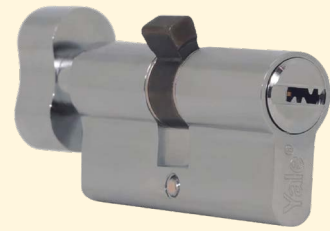
**YMSL-1003-RG**  
(Finish: Rose Gold)



**YPSL-126**  
(Finish: Satin Stainless Steel)



**YPSL-124**  
(Finish: Satin Stainless Steel)



**70 MM TT SN S**  
(Finish: Satin Stainless Steel)



**DC60 SN**  
(Finish: Rose Satin Stainless Steel)



**248545BRSS04 3 Bolt**  
(Finish: Satin Stainless Steel)

## Features

- Product Range:** Solid SS/ Tubular SS
- Door Thickness:** 30mm to 50 mm,
- Fixing/ Patching:** Full concealed mortise lock,
- Keying:** Fixed can Euro profile Cylinders,
- Materials:** SS latchbolt, deadbolt & faceplat
- Standards:** Complies to EN12209 Fire Tested to AS 1530.4-2005
- Standard Finishes:** Satin Stainless Steel-SSS

## Yale Mortise Handle Set



*Safe and Secure*







## Key In Knob



CA5147US32D



VCA5227 US32D



CA5147US5



VCA5227 US3



VBR5127 US32D



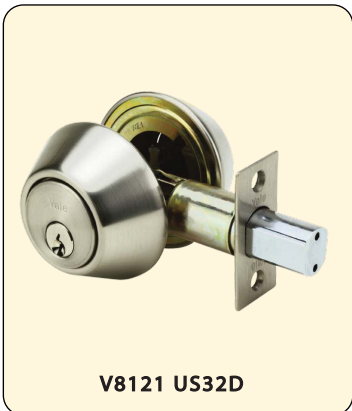
VCA5227 US5

### Specification

Specification : Key In Knob  
 Standard : ANSI/BHMA A156.2 2003  
 Latch/Bolt : Zinc  
 Strike : Stainless Steel/Steel  
 Rose : Stainless Steel/Brass  
 Door Thickness : 35-45 mm  
 Cylinder : Solid Brass 5-pin tumbler cylinder  
 No. of keys : 3 nickle plated brass keys  
 Knob Style : VCA, VBR, CA  
 Knob : Stainless Steel/Brass  
 Backset : 60mm. / 70mm  
 Function : Entrance and privacy



## Security Lock



V8121 US32D



V8121 US5



V8111 US32D



V8111 US5

### Product Specification

Cycles Test : 100,000 cycles  
 Materials : Steel  
 Latch or Bolt : Zinc  
 Cylinder Housing : Steel  
 Round Plate : Brass  
 Backset : 60-70mm  
 Door Thickness : 35-45 mm  
 Function : Residential applications  
 Anti-Sawing Insert : Hardened Steel  
 Cylinder : Solid Brass 5-pin Tumbler Cylinder  
 No. of Keys : 3 pieces of Nikle Plated Brass Keys

Product Name	Model	Finish
Security Lock	V8121 US32D	Satin Stainless Steel
Security Lock	V8111 US32D	Satin Stainless Steel
Security Lock	V8121 US5	Antique Brass
Security Lock	V8111US5	Antique Brass



## Key In Lever



L6517 US5



L6517 US15



VL5317 US5



VL5367 US15

### Features:

**Specification :** Key In Lever

**Standard :** ANSI/BHMA A156.2 2003

**Testing Cycles :** 175,000 cycles

**Backset :** 60mm. / 70mm.

**Door Thickness :** 35-45

**Function :** Entrance and privacy

**No. of keys :** 3 nickle plated brass keys

**Available Finish:** Golden, Antique, Brass, Stainless Steel



Key in Knob



## Door Closer



YDC 773 HO



DCR 504

### Features:

**YDC 773 HO :**

Yale Hold Open Size 2-4

**C7722/DC115 :**

Yale Door Closer - Size 2-4, Standard Arm, FR (Surface)

**DCR504:**

Yale Door Closer - Size 2-4, Standard Arm, FR (Surface)

**YIC5124HO:**

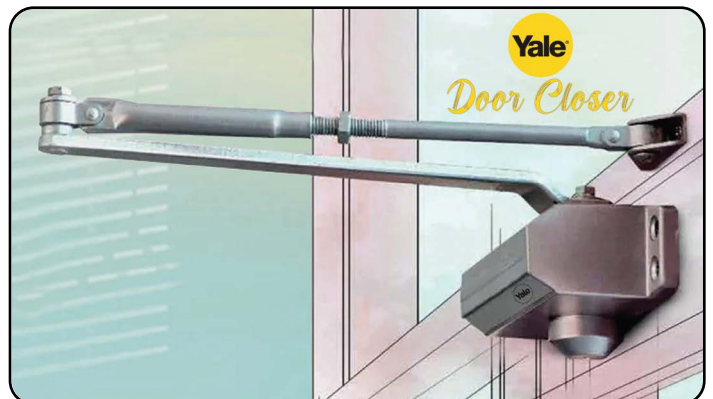
Yale Door Closer - Size 2-4, Cam Action, HO, HP (Concealed)



C7722/DC115



YIC5124HO



Door Closer





### YSFB/400/EB1

High Security Fingerprint Safe Office - YSFB/400/EB1

Technical Details

1. Exterior dimensions - H400 x W350 x D340 mm
2. Interior dimensions - H392 x W345 x D285 mm
3. Net weight - 17 kg
4. Volume - 38.5 litres



### Stellar 250/DB2

1. Dimensions - Stellar 250/DB2

2. Exterior dimensions - H250xW350xD250mm
3. Interior dimensions - H247xW347xD194.5mm
4. Net weight - 9 kg
5. Volume - 16.7 Litres



### YSFM/250/EG1

Motorised Biometric Maximum Security Office Safe - Fingerprint and Digital Pin Code Access, Laser Cut Door,

Mounting Bolts - Int. Dims: 240 x 337 x 230 mm

1. Lock type Electronic, Jumpsuit
2. Item dimensions L x W x H 25 x 35 x 30 centimetres
3. Material Alloy Steel
4. Weight 13.18 Kilograms



### YLEM/200/EG1

Maximum Security Laptop Digital Safe, PIN, Black Pin Code Access: Enjoy convenience of easy opening thanks to pin code access. 100,000+ combinations, 4 to 8 digit code. Protect documents, jewelry, keys or any other valuable items.

1. External dimensions : H x W x D: 200 x 480 x 350 mm
2. Internal dimensions : H x W x D: 190 x 467 x 280 mm
3. Net Weight (kg): 18, 4. Volume (litres): 24.8



### Digital Locker Safe

Certified by KS (Korea Standard)

Code access

Fire Resistance 60 Minutes



# Door Accessories



**YFB 020:** SS304 200mm timber flush bolt, Satin finish



**YBB 020 & 030-6" & 8":** SS304 tower bolt, Satin finish; length: 8"/6"



**3S2BB403030:** 102 x 76 x 30 - 2 Ball Bearing Button Tipped SSS 304



**DRW 20MM-DK:** Yale Furniture Drawer Lock



**297D SN:** Single Cylinder & thumb turn



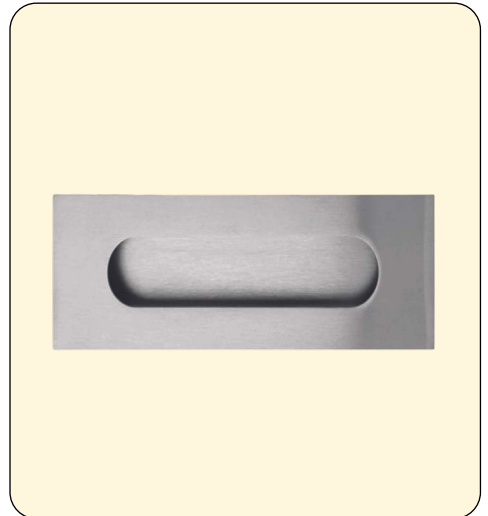
**YDH010-Magnetic Door Holder**  
Magnetic door holder, 75 x 75mm,



**YDS 010:** SS304 half moon floor door stopper, Satin finish; dia. 44x25 mm,



**DG002ZA:** Security Door Guard, Satin Chrome US26D



**YFP020-Concealed Fixed Flush Pull**  
Measurement : 150MMx50MM





**YDG030AB**  
Finish: Antique Brass,Dia: 16



**YDG030SS**  
Finish: Antique Brass,Dia: 16



**3S2BB403030 SS** :102 x 76 x 30  
2 Ball Bearing Button Tipped SSS 304



**YDS 010 SS**: SS304 half moon floor door stopper, Satin finish;dia,44x25



**YDS 010 MG** : SS304 half moon floor door stopper, Satin finish;dia,44x25



**YFB020 SS/YFB030 SS**:  
SS304 200mm timber flush bolt, Satin finish



**YDH010 SS**-Magnetic Door Holder  
Magnetic door holder, 75 x 75mm,



**YDH010 AB**-Magnetic Door Holder  
Magnetic door holder, 75 x 75mm



**YBB020 & 030 AB**-6" & 8"  
Tower Bolt AB Finish, Length: 8" & 6"



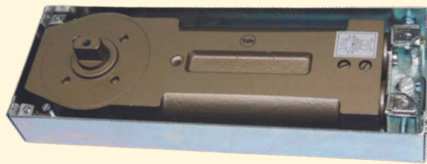
# Glass Door Fittings



**L010**



**P010**



**YFS934/YFS923**



**P020**



**AEH 01C900**



**Center Lock**



**Glass Lock**







Y2112 US26



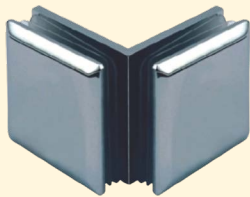
Y2721



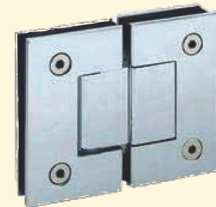
Glass Connector



Y2725



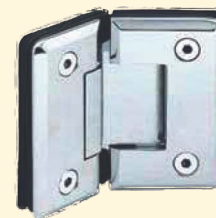
Y2545 US26



Glass to Glass 180°



Y2541 US26



Glass to Glass 135°

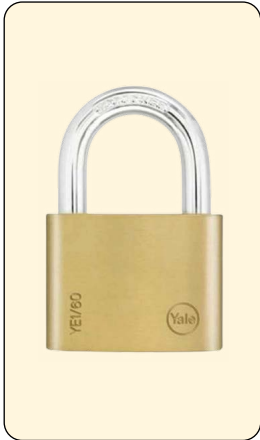


Glass to Glass 90°



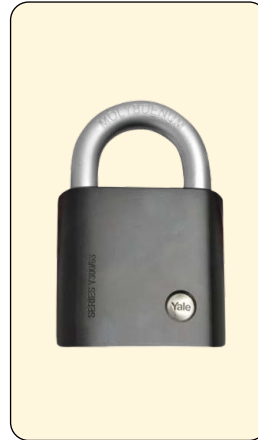


## Padlock & Bike lock



### YE1601321:

1. Padlock-60mm
2. Body material: Solid Brass
3. Shackle material: Chrome-plated Hardened Steel
4. No of keys: 3
5. Anti-pull double locking latch
6. Suitable for locker, cabinet and entrance



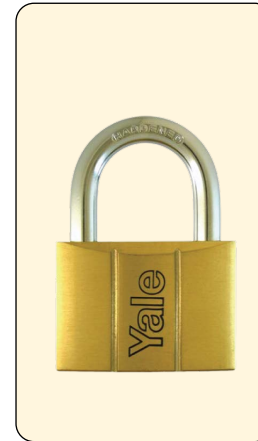
### Y300631271

1. Padlock-63mm-63mm
2. Molybdenum Steel Shackle
3. Solid Hardened Steel Body
4. Double Ball Bearing Lock
5. High Security Cylinder



### Y125401631

1. 40mm Hardened Steel Shackle,
2. Laminated Steel Body,
3. Double Ball Bearing Lock.
4. Long Shackle.



### Y14070

1. Padlock 70mm-140 Brass Padlock Series
2. Body material: Solid Brass
3. Shackle material: Hardened Steel
4. Size: 70mm
5. No. of keys: 3



### YUL216201

1. Steel barrel with PP housing
2. Hardened steel with PVC jacket
3. Disc cylinder with 2 keys
4. Strength rating: 8
5. Diameter of shackle (without sleeve): 16mm
6. Shackle clearance: 205mm (H), 103mm (W)
7. Body (WxHxD): 185x36x37mm



### YKB540CB2 (Yale Key Box)

1. Adjustable 3-digit code combination
2. Scratch-resistant black matt finish
3. With writable index
4. Execution-Metal key cabinet for up to 46 keys
5. (W x H x D) 240 x 300 x 80 mm



### YCCL181201

1. Flexible cable locks through the frame,
2. Wheel and anchor post with ease
3. 4-digit resettable combination lock
4. Large printed digits for ease of use
5. Covered steel cable
6. Combination Cable Lock 8mm Diameter 1200mm
7. Lock Cable Combo Bike 8x1200mm



### YCL1101601

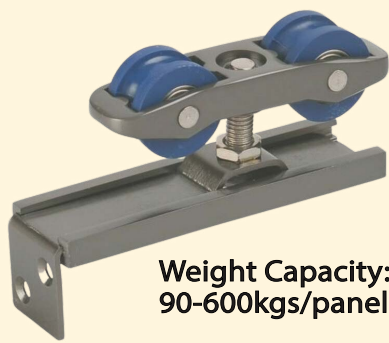
1. Braided steel wire with PVC sleeve
2. Disc cylinder
3. Mounting Bracket included
4. Zinc alloy with nylon housing
5. Dimensions (WxHxD): 60x47x32mm
6. Strength Rating: 4

# Sliding & Folding Solution

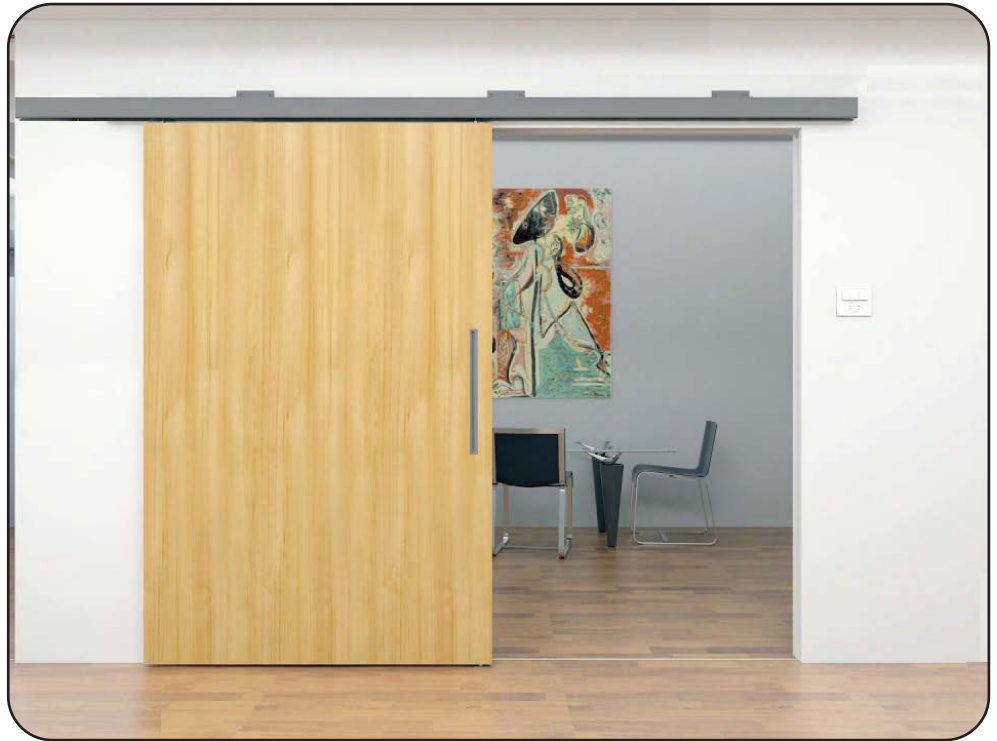
## Wooden Sliding Fittings



**Weight Capacity:**  
80-150kgs/panel



**Weight Capacity:**  
90-600kgs/panel



## Glass Sliding Fittings



**Glass Sliding Fitting Synchro**  
For 10mm to 12 mm,  
Stainless Steel Body  
**Weight Capacity:**  
80-120kgs/panel







## Yale Hotel Lock

1. Wireless access control lockset
2. Secure Data-on-card Electronic Lock
3. High security Stainless Steel mortise Euro version lock case.
4. Mortise equipped 20 mm throw high strength deadbolt.
5. Panic release function By Inside Handle
6. High security mechanical override cylinder available
7. Tested on fire door for upto 180 mins.
8. 414 events audit trail.
9. ADA compliant (guest with physical disabilities).
10. 3-point stainless SS latch construction
11. 13.56MHz Mifare Classic One (encrypted)
12. Eleven free sectors for future All-in-One card application use



## Yale EM Lock

1. 9DC Electro-mechanical 1/4 HP
2. Door Width : Max. 16 feet
3. Door Weight : 300 lbs
4. Power Consumption : 250W
5. Opening Time :1.5 Sec. Max. size\* (700mm/sec.)
6. Closing Time:3.5 Sec. Max. size
7. Power Supply: 85V-265V adjusting automatically
8. ANSI 156.10, ANSI A117.1,





**Our Valuable Partners**





# Our Valuable Partners



SPACEZERO



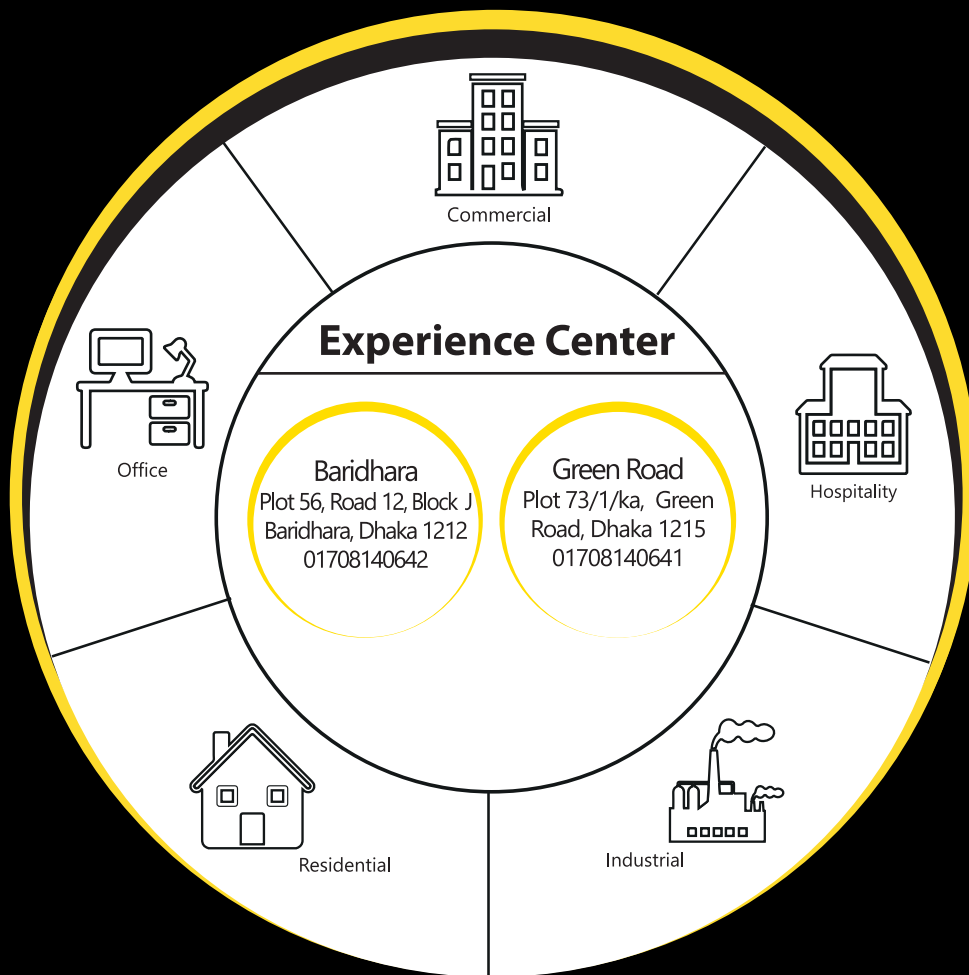
ACTIVE BUILDERS







The world's favorite lock



**Head Office: Concord Colosseum, Level: 5, 156, Kemal Ataturk Avenue, Banani, Dhaka-1213**

[facebook.com/platformsl/](https://www.facebook.com/platformsl/), <https://platformsl.com>  
an ASSA ABLOY Group Brand

**platform**  
*Solutions Ltd*

